

# HARKEN®

## INSTRUCTIONS

### Carbo® OneTouch® Locking Winch Handle

N15W24983 Bluemound Road • Pewaukee, WI 53072 U.S.A.  
Telephone: (262) 691-3320 • Fax: (262) 701-5780  
Web: www.harken.com • Email: harken@harken.com

### Using the Carbo OneTouch

The Harken Carbo® OneTouch® handle fits most winches however always check the fit in any winch brand to make sure the handle locks and releases before using the handle.



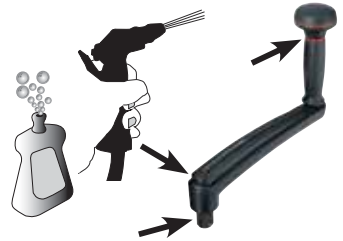
**CAUTION!** Before initially using handle with electric or hydraulic winches, check to make sure the disconnect rod locks out the motor. To test, insert handle, stand clear and push power button. Handle should NOT spin.



**WARNING!** Avoid using the handle body for stability or as a hiking device. The grab bar could accidentally compress, releasing the handle from the winch and causing injury.

### Maintenance

Keep your handle clean and free-running by frequently flushing with fresh water. Periodically clean with mild detergent and water solution. Squirt soap solution into these areas. Spin grip and knob, depress grab bar and lock pin mechanism to distribute soap solution evenly. Flush with fresh water.



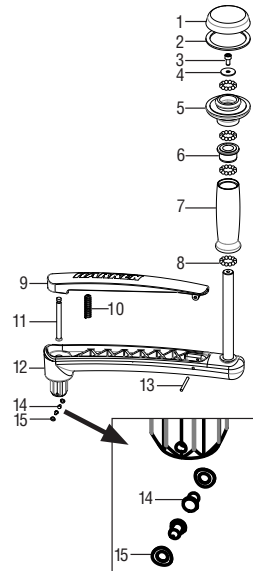
### Warranty

For safety, maintenance, and warranty information: [www.harken.com/manuals](http://www.harken.com/manuals) or the Harken catalog.

### B10HOT

No.	Qty.	Part No.	Description
1	1	S351240097	Top knob
2	1	S351270082	Red washer HFS334
3	1	HFS334	Screw M5x10 SHCS*
4	1	H-69104	SS washer
5	1	S351250082	Lower knob support
6	1	S351260082	Bushing
7	1	S277640082	Handle grip
8	48	MP-121	Ball 3/16" Delrin® bearings (48)
9	1	H-67986	Grab bar
10	1	H-67991	Spring
11	1	H-67974	Plunger pin
12	1	H-67969	Body assembly
13	1	HFS683	Roll pin — 1/8 x 1 1/4"
14	2	H-67975	Lock pin (2)
15	2	H-67985	Curved spring washer (2)

\* Assemble with one drop blue Loctite® adhesive.



## Using the Carbo OneTouch

The Harken Carbo® OneTouch® handle fits most winches however always check the fit in any winch brand to make sure the handle locks and releases before using the handle.



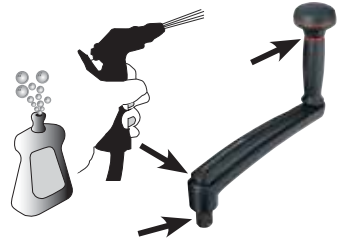
**CAUTION!** Before initially using handle with electric or hydraulic winches, check to make sure the disconnect rod locks out the motor. To test, insert handle, stand clear and push power button. Handle should NOT spin.



**WARNING!** Avoid using the handle body for stability or as a hiking device. The grab bar could accidentally compress, releasing the handle from the winch and causing injury.

## Maintenance

Keep your handle clean and free-running by frequently flushing with fresh water. Periodically clean with mild detergent and water solution. Squirt soap solution into these areas. Spin grip and knob, depress grab bar and lock pin mechanism to distribute soap solution evenly. Flush with fresh water.



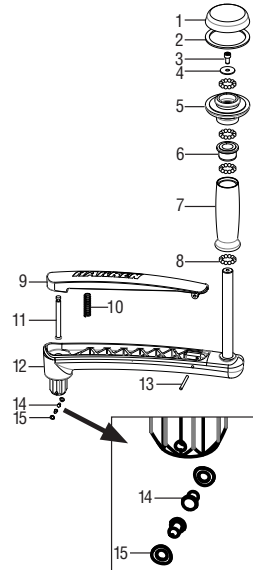
## Warranty

For safety, maintenance, and warranty information: [www.harken.com/manuals](http://www.harken.com/manuals) or the Harken catalog.

## B10HOT

No.	Qty.	Part No.	Description
1	1	S351240097	Top knob
2	1	S351270082	Red washer HFS334
3	1	HFS334	Screw M5x10 SHCS*
4	1	H-69104	SS washer
5	1	S351250082	Lower knob support
6	1	S351260082	Bushing
7	1	S277640082	Handle grip
8	48	MP-121	Ball 3/16" Delrin® bearings (48)
9	1	H-67986	Grab bar
10	1	H-67991	Spring
11	1	H-67974	Plunger pin
12	1	H-67969	Body assembly
13	1	HFS683	Roll pin — 1/8 x 1 1/4"
14	2	H-67975	Lock pin (2)
15	2	H-67985	Curved spring washer (2)

\*Assemble with one drop blue Loctite® adhesive.



Delrin is a registered trademark of E. I. du Pont de Nemours and Company or its affiliates.  
Loctite is a registered trademark of Henkel AG & Company KGaA.